

# Human IL-17A/CTLA-8 Protein

Cat. No. ILA-HM118

## Description

<b>Source</b>	Recombinant Human IL-17A/CTLA-8 Protein is expressed from HEK293 with His tag at the C-Terminus. It contains Gly24-Ala155.
<b>Accession</b>	Q16552-1
<b>Molecular Weight</b>	The protein has a predicted MW of 16.2 kDa. Due to glycosylation, the protein migrates to 15-20 kDa and 25-30 kDa based on Bis-Tris PAGE result.
<b>Endotoxin</b>	Less than 1EU per µg by the LAL method.
<b>Purity</b>	> 95% as determined by Bis-Tris PAGE > 95% as determined by HPLC

## Formulation and Storage

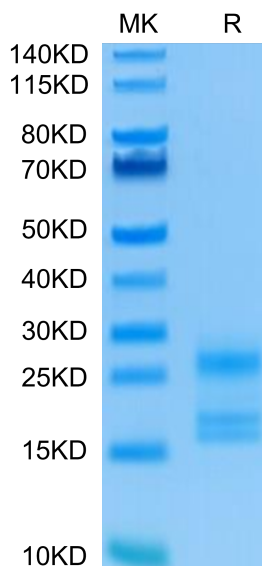
<b>Formulation</b>	Lyophilized from 0.22µm filtered solution in PBS (pH 7.4). Normally 8% trehalose is added as protectant before lyophilization.
<b>Reconstitution</b>	Centrifuge the tube before opening. Reconstituting to a concentration more than 100 µg/ml is recommended. Dissolve the lyophilized protein in distilled water.
<b>Storage</b>	-20 to -80°C for 12 months as supplied from date of receipt. -80°C for 3 months after reconstitution. Recommend to aliquot the protein into smaller quantities for optimal storage. Please minimize freeze-thaw cycles.

## Background

Interleukin17A (IL17A), also known as CTLA8, is a 1520 kDa glycosylated cytokine that plays an important role in antimicrobial and chronic inflammation. The six IL17 cytokines (IL17AF) are encoded by separate genes but adopt a conserved cystine knot fold. IL-17A is a ligand for IL17RA and IL17RC. The heterodimer formed by IL17A and IL17F is a ligand for the heterodimeric complex formed by IL17RA and IL17RC. Involved in inducing stromal cells to produce proinflammatory and hematopoietic cytokines.

## Assay Data

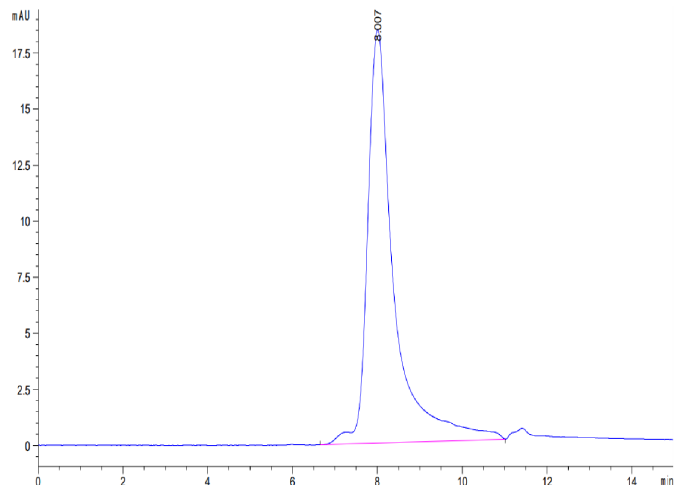
### Bis-Tris PAGE



Human IL-17A on Bis-Tris PAGE under reduced condition. The purity is greater than 95%.

### SEC-HPLC

Assay Data

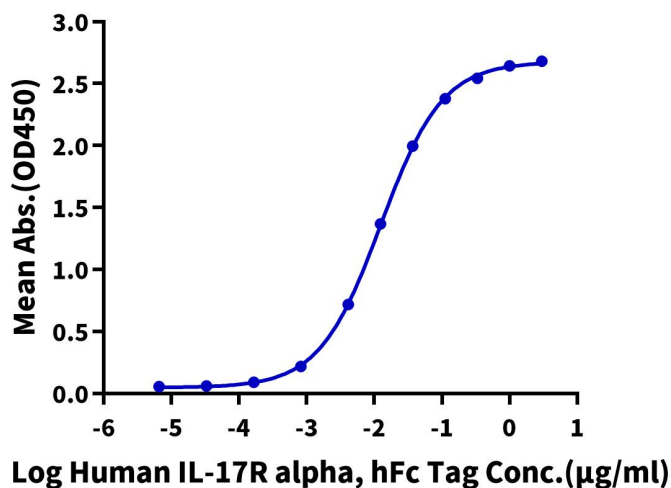


The purity of Human IL-17A is greater than 95% as determined by SEC-HPLC.

ELISA Data

**Human IL-17A, His Tag ELISA**

0.1µg Human IL-17A, His Tag Per Well

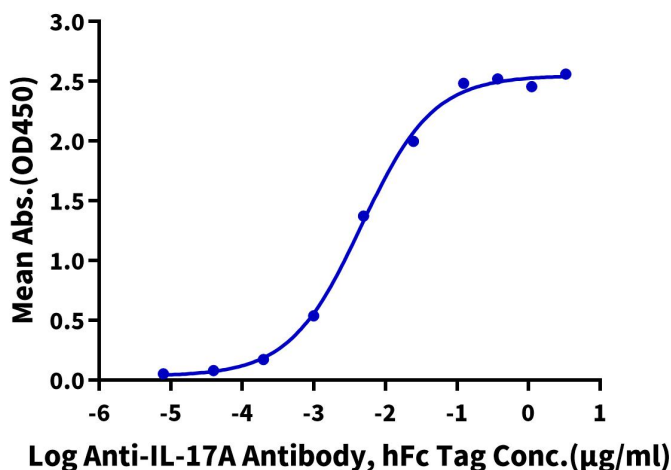


Immobilized Human IL-17A, His Tag at 1µg/ml (100µl/well) on the plate. Dose response curve for Human IL-17R alpha, hFc Tag with the EC50 of 12.4ng/ml determined by ELISA (QC Test).

ELISA Data

**Human IL-17A, His Tag ELISA**

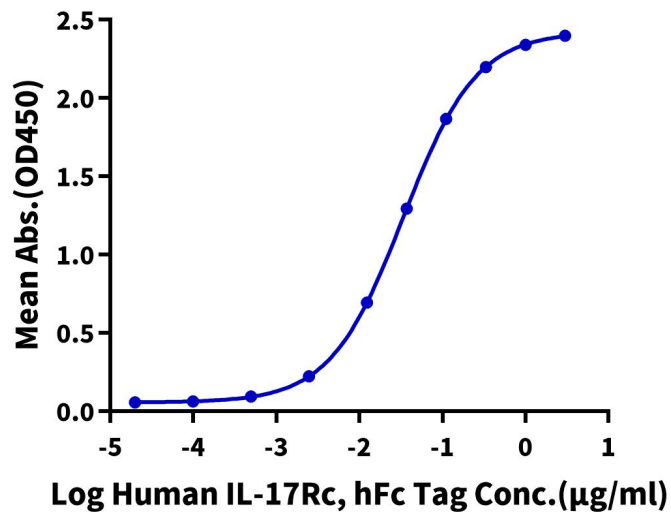
0.05µg Human IL-17A, His Tag Per Well



Immobilized Human IL-17A, His Tag at 0.5µg/ml (100µl/well) on the plate. Dose response curve for Anti-IL-17A Antibody, hFc Tag with the EC50 of 4.6ng/ml determined by ELISA.

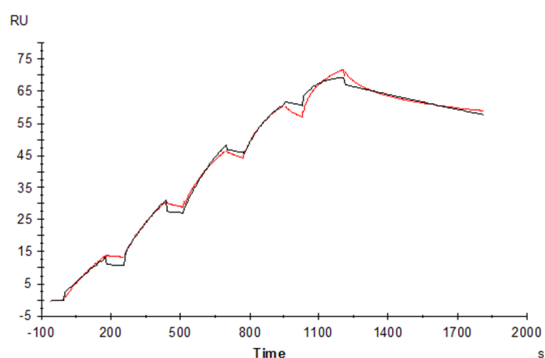
## Assay Data

## ELISA Data

**Human IL-17A, His Tag ELISA**0.2 $\mu$ g Human IL-17A, His Tag Per Well

Immobilized Human IL-17A, His Tag at 2 $\mu$ g/ml (100 $\mu$ l/Well) on the plate. Dose response curve for Human IL-17Rc, hFc Tag with the EC50 of 33.8ng/ml determined by ELISA.

## SPR Data



Human IL-17R alpha, His Tag immobilized on CM5 Chip can bind Human IL-17A, His Tag with an affinity constant of 1.57nM as determined in SPR assay (Biacore T200) (Routine Test).